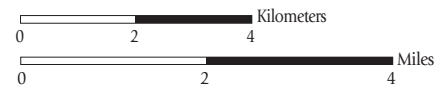


South Bay Salt Pond Restoration Project

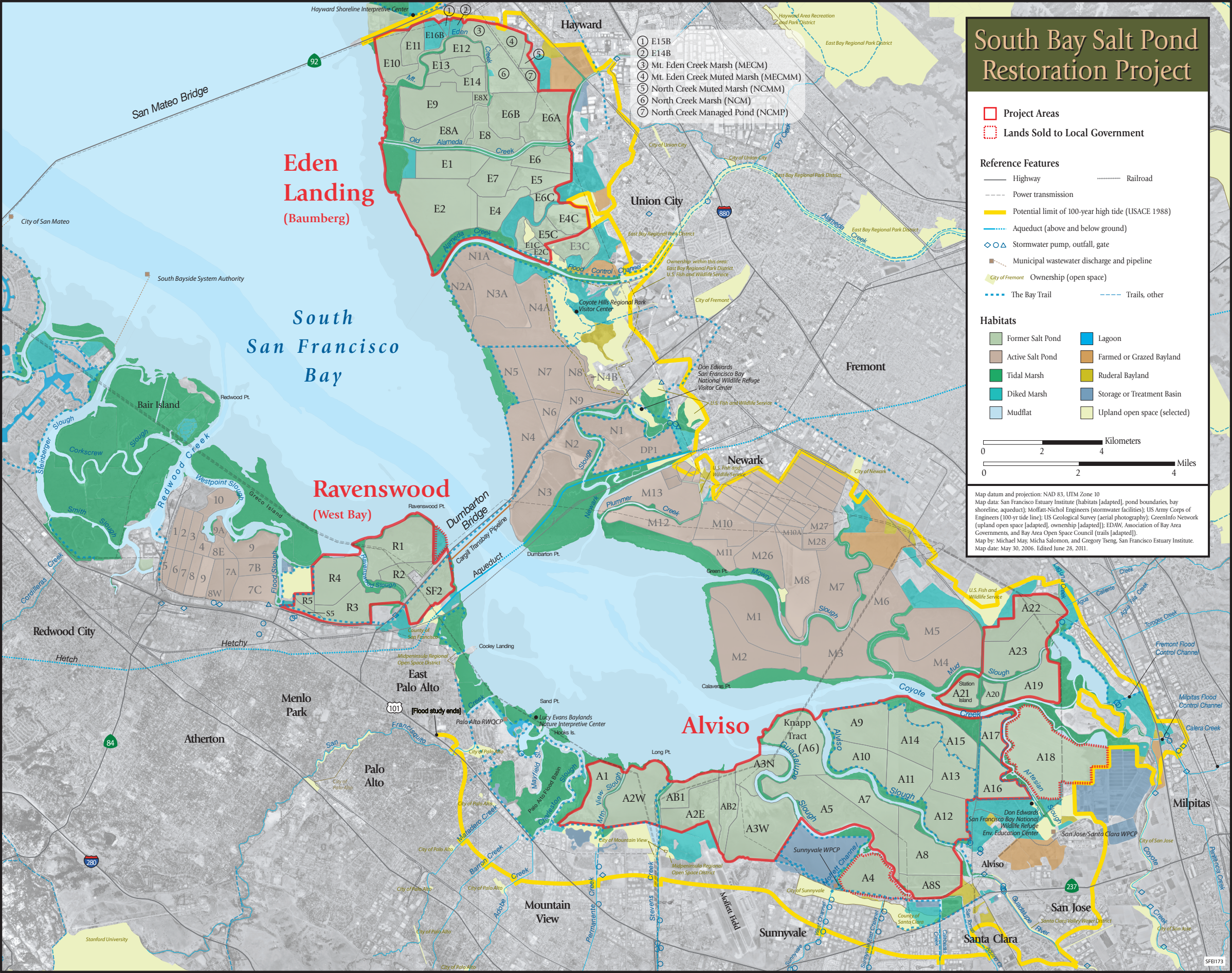
- Project Areas
- Lands Sold to Local Government

- ### Reference Features
- Highway
 - Power transmission
 - Potential limit of 100-year high tide (USACE 1988)
 - Aqueduct (above and below ground)
 - Stormwater pump, outfall, gate
 - Municipal wastewater discharge and pipeline
 - City of Fremont Ownership (open space)
 - The Bay Trail
 - Trails, other

- ### Habitats
- | | |
|---|---|
| Former Salt Pond | Lagoon |
| Active Salt Pond | Farmed or Grazed Bayland |
| Tidal Marsh | Ruderal Bayland |
| Diked Marsh | Storage or Treatment Basin |
| Mudflat | Upland open space (selected) |



Map datum and projection: NAD 83, UTM Zone 10
 Map data: San Francisco Estuary Institute (habitats [adapted], pond boundaries, bay shoreline, aqueduct); Moffatt-Nichol Engineers (stormwater facilities); US Army Corps of Engineers (100-yr tide line); US Geological Survey (aerial photography); GreenInfo Network (upland open space [adapted], ownership [adapted]); EDAW, Association of Bay Area Governments, and Bay Area Open Space Council (trails [adapted]).
 Map by: Michael May, Micha Salomon, and Gregory Tseng, San Francisco Estuary Institute.
 Map date: May 30, 2006. Edited June 28, 2011.



- ① E15B
- ② E14B
- ③ Mt. Eden Creek Marsh (MECM)
- ④ Mt. Eden Creek Muted Marsh (MECMM)
- ⑤ North Creek Muted Marsh (NCMM)
- ⑥ North Creek Marsh (NCM)
- ⑦ North Creek Managed Pond (NCMP)